

Plastic square shape photoelectric sensors **PSR** series

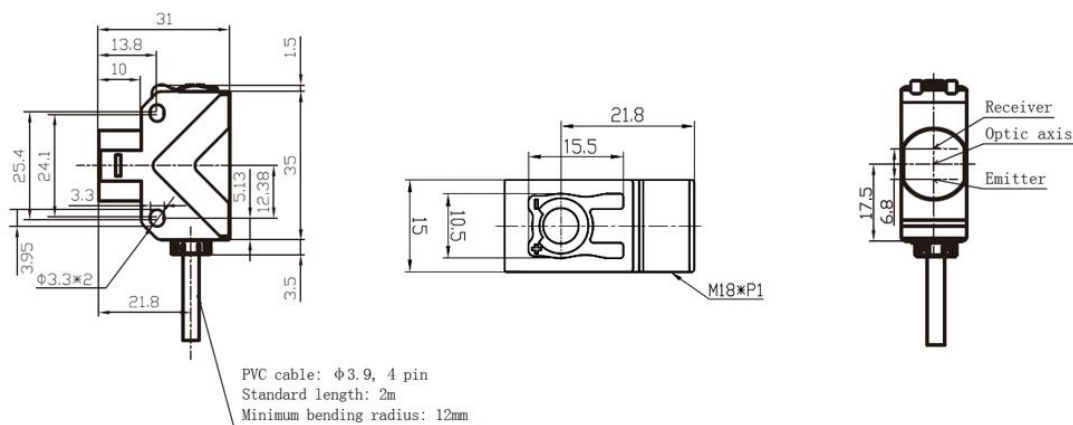
**Features**

- ◆ 18mm threaded cylindrical installation or side installation, it is an ideal substitute for various styles of sensors;
- ◆ Background suppression type, stable detection regardless of white or black detected objects;
- ◆ With 360° visible bright LED status indicator;
- ◆ Visible light spot, easy to install and debug.


**Part number**

NPN	PSR-YC10DNBR	PNP	PSR-YC10DPBR
-----	--------------	-----	--------------

Technical specifications			
Detection type	Background suppression	Anti-ambient light	Anti-ambient light interference < 10,000lx;
Rated distance [Sn]	100mm(not adjustable)		Incandescent light interference < 3,000lx
Light source	Red LED (660nm)	Indicator display	Green light: power indicator, stable indication (low brightness, weak signal)
Light spot	8*8mm@10cm		Yellow light: output indication, short circuit or overload indication (flashing)
Output	NO/NC	Ambient temperature	-15°C...60°C
Hysteresis range [%/Sr]	≤5%	Ambient humidity	35-95%RH (non-condensing)
Supply voltage	10...30VDC	Voltage withstand	1000V/AC 50/60Hz 60s
Load current	≤100mA	Insulation resistance	≥50MΩ(500VDC)
Residual voltage	≤1.8V	Vibration resistance	10...50Hz (0.5mm)
Distance adjustment	Non-adjustable	Degree of protection	IP67
Consumption current	≤25mA	Housing material	ABS
Circuit protection	Short-circuit, overload, reverse polarity and zener protection	Installation method	Composite installation
Response time	≤0.5ms	Optical components	Plastic PMMA
NO/NC adjustment	NO: white line is connected to the positive electrode;	Weight	52g
	NC: white line is connected to the negative electrode;	Connection type	2m PVC cable

**Dimensions**


Wiring diagram

