



TV8S 335-12Z

- 1 Cable entry M 20 x 1.5
- Metal enclosure
- Good resistance to oil and petroleum spirit
- Actuator heads can be repositioned by 4 x 90°
- 40,5 mm x 107 mm x 65,3 mm
- Actuator shaft can be turned 360°

Data

Ordering data

| | |
|-------------------------------|---------------|
| Product type description | TV8S 335-12Z |
| Article number (order number) | 101179250 |
| EAN (European Article Number) | 4030661311685 |
| eCl@ss number, version 12.0 | 27-27-06-09 |
| eCl@ss number, version 11.0 | 27-27-06-09 |
| eCl@ss number, version 9.0 | 27-27-06-09 |
| ETIM number, version 7.0 | EC002591 |
| ETIM number, version 6.0 | EC002591 |

Approvals - Standards

| | |
|--------------|--------------|
| Certificates | cULus CCC |
|--------------|--------------|

General data

| | |
|--------------------------|-------------------------|
| Housing material | Light alloy die-casting |
| Housing coating material | painted |
| Gross weight | 280 g |

General data - Features

| | |
|------------------------------|---|
| Number of auxiliary contacts | 1 |
| Number of safety contacts | 2 |

Safety classification

| | |
|--------------|---|
| Standards | BG-GS-ET-15 EN ISO 13849-1 EN IEC 60947-5-1 |
| Mission time | 20 Year(s) |

Safety classification - Safety outputs

| | |
|---|-----------------------|
| B _{10D} Normally-closed contact (NC) | 20,000,000 Operations |
|---|-----------------------|

Mechanical data

| | |
|------------------------------|----------------------|
| Actuating element | Other |
| Mechanical lifetime, minimum | 1,000,000 Operations |
| Positive break angle | 7 ° |
| Mounting hole for the shaft | 8 mm |
| Positive break torque | 0.6 Nm |

Mechanical data - Connection technique

| | |
|------------------------|---|
| Termination | Screw terminals M20 x 1.5 |
| Cable section, minimum | 0.75 mm ² |
| Cable section, maximum | 2.5 mm ² |
| Note | All indications including the conductor ferrules. |

Mechanical data - connector side B

| | |
|---------------|------------------|
| Connector typ | Female connector |
|---------------|------------------|

Mechanical data - Dimensions

| | |
|------------------|---------|
| Length of sensor | 65.3 mm |
| Width of sensor | 40.5 mm |
| Height of sensor | 107 mm |

Ambient conditions

| | |
|----------------------|----------------|
| Degree of protection | IP67 |
| Ambient temperature | -25 ... +70 °C |

Ambient conditions - Insulation values

| | |
|---|-------|
| Rated insulation voltage U_i | 500 V |
| Rated impulse withstand voltage U_{imp} | 6 kV |

Electrical data

| | |
|--------------------------------------|---------|
| Thermal test current | 10 A |
| Required rated short-circuit current | 400 A |
| Utilisation category AC-15 | 230 VAC |

Utilisation category AC- 4 A
15

Utilisation category DC- 24 VDC
13

Utilisation category DC- 4 A
13

Switching element NO contact, NC contact

Switching principle Slow action

Maximale 1,000 /h
Schalthäufigkeit

Material of the Silver
contacts, electrical

Note

Note (General) By turning the head in 90° steps, 8 actuating planes are possible. A Torx T10 screwdriver is required for this purpose. Even when the screw is removed, the head is self-retaining. The switch can still not be tampered.
Adjustment tool: locking screw to fix, shaft pre-drilled to pin
Universal joint available to compensate for axial displacement (only for shaft bore 10 mm)

Pictures

Product picture (catalogue individual photo)



ID: ktv33f01

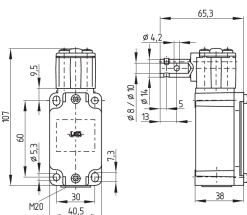
| 726.4 kB | .jpg | 352.778 x 555.978 mm - 1000 x 1576 px - 72 dpi

| 82.3 kB | .png | 74.083 x 116.769 mm - 210 x 331 px - 72 dpi

| 33.7 kB | .png | 74.083 x 74.083 mm - 210 x 210 px - 72 dpi

| 6.0 MB | .png | 166.557 x 262.578 mm - 2000 x 3153 px - 305 dpi

Dimensional drawing basic component



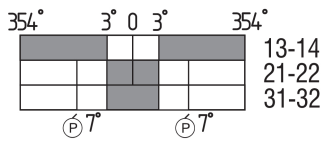
ID: 1tvs3g01

| 38.8 kB | .cdr |

| 10.4 kB | .png | 74.083 x 51.858 mm - 210 x 147 px - 72 dpi

| 127.2 kB | .jpg | 352.778 x 247.297 mm - 1000 x 701 px - 72 dpi

Switch travel diagram



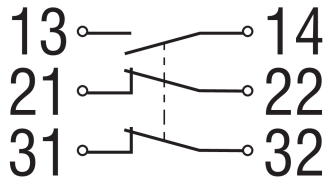
ID: ktvs3s04

| 34.4 kB | .cdr |

| 2.6 kB | .png | 74.083 x 30.692 mm - 210 x 87 px - 72 dpi

| 72.4 kB | .jpg | 352.778 x 145.344 mm - 1000 x 412 px - 72 dpi

Diagram

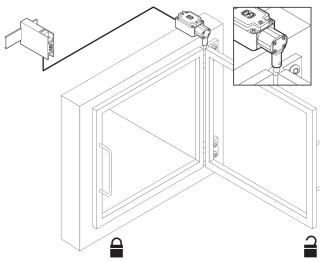


ID: k2o1sk02

| 82.3 kB | .jpg | 352.778 x 193.322 mm - 1000 x 548 px - 72 dpi

| 3.2 kB | .png | 74.083 x 40.569 mm - 210 x 115 px - 72 dpi

Sample application illustration product



ID: pssp-a19

| 435.4 kB | .cdr |

| 16.6 kB | .png | 74.083 x 57.856 mm - 210 x 164 px - 72 dpi

| 161.7 kB | .jpg | 352.778 x 275.872 mm - 1000 x 782 px - 72 dpi

K.A. Schmersal GmbH & Co. KG, Möddinghofe 30, 42279 Wuppertal

The details and data referred to have been carefully checked. Images may diverge from original. Further technical data can be found in the manual. Technical amendments and errors possible.

Generated on: 27/02/2026, 14:20