



BNS 260-11Z-R

- Pre-wired cable
- Thermoplastic enclosure
- small body
- Concealed mounting possible
- 26 mm x 36 mm x 13 mm
- Long life
- no mechanical wear
- Insensitive to transverse misalignment
- Insensitive to soiling

Data

Ordering data

| | |
|-------------------------------|---------------|
| Product type description | BNS 260-11Z-R |
| Article number (order number) | 101184371 |
| EAN (European Article Number) | 4030661321691 |
| eCl@ss number, version 12.0 | 27-27-44-01 |
| eCl@ss number, version 11.0 | 27-27-24-02 |
| eCl@ss number, version 9.0 | 27-27-24-02 |
| ETIM number, version 7.0 | EC002544 |
| ETIM number, version 6.0 | EC002544 |

Approvals - Standards

| | |
|--------------|-------|
| Certificates | cULus |
|--------------|-------|

General data

| | |
|--|---------------------------------------|
| Standards | BG-GS-ET-14 EN IEC 60947-5-3 |
| Coding level according to EN ISO 14119 | Low |
| Working principle | Magnetic drive |
| Installation conditions (mechanical) | quasi-flush |
| Housing material | Glass-fibre, reinforced thermoplastic |
| Gross weight | 55 g |

General data - Features

| | |
|--------------------------------|-----|
| Coding | Yes |
| Number of normally closed (NC) | 1 |
| Number of normally open (NO) | 1 |
| Number of safety contacts | 2 |

Safety classification

| | |
|--------------|----------------|
| Standards | EN ISO 13849-1 |
| Mission time | 20 Year(s) |

Safety classification - Safety outputs

| | |
|--|-----------------------|
| B _{10D} Normally-closed contact (NC) | 25,000,000 Operations |
| B _{10D} - Value Normally-closed contact/Normally open contact (NC/NO) | 25,000,000 Operations |

Mechanical data

| | |
|---------------------|-------------------------------|
| Actuating element | Magnet |
| Door hinge | Right |
| Direction of motion | Head-on to the active surface |

Mechanical data - Switching distances

| | |
|---|--|
| Note (Switching distance S_n) | Axial misalignment, a horizontal and vertical misalignment of the safety sensor and the actuator are tolerated. The possible misalignment depends on the distance of the active surfaces of the sensor and the actuator. The sensor remains active within the tolerance range. |
| Assured switching distance "ON" S_{ao} | 5 mm |
| Assured switching distance "OFF" S_{ar} | 15 mm |
| Note (switching distance) | All switching distances in accordance EN IEC 60947-5-3 |

Mechanical data - Connection technique

| | |
|------------------------------|----------------------|
| Length of cable | 1 m |
| Termination | cable |
| Number of cable wires | 4 |
| Wire cross-section | 0.25 mm ² |
| Wire cross-section | 23 AWG |
| Material of the Cable mantle | PVC |

Mechanical data - Dimensions

| | |
|------------------|-------|
| Length of sensor | 13 mm |
| Width of sensor | 26 mm |
| Height of sensor | 36 mm |

Ambient conditions

| | |
|-----------------------------------|------------------------------|
| Degree of protection | IP67 |
| Ambient temperature | -25 ... +70 °C |
| Storage and transport temperature | -25 ... +70 °C |
| Resistance to vibrations | 10 ... 55 Hz, amplitude 1 mm |
| Resistance to shock | 30 g / 11 ms |

Ambient conditions - Insulation values

Rated insulation voltage U_i 50 VAC
75 VDC

Rated impulse withstand
voltage U_{imp} 0.8 kV

Electrical data

Required rated short-circuit
current 100 A

Switching voltage, maximum 75 VDC

Switching current, maximum 0.4 A

Switching capacity, maximum 10 VA

Switching element 1 NO contact, 1 NC contacts

Switching frequency,
maximum 5 Hz

Scope of delivery

Scope of delivery Actuator must be ordered separately.

Accessory

Recommendation (actuator) BPS 260

Recommended safety
switchgear SRB-E-301ST
SRB-E-201LC

Note

Note (General) Contact symbols shown for the closed condition of the guard device.
The contact configuration for versions with or without LED is identical.

Wiring example

Note (Wiring diagram) The contacts S13-S14 and S21-S22 must be integrated in the safety circuit.

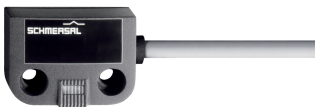
Ordering code

Product type description:
BNS 260-(1)(2)Z(3)-(4)-(5)

| | | |
|----------------|--|--|
| (1) | | |
| 11 | | 1 NO contact/1 NC contact |
| 02 | | 2 NC contact |
| (2) | | |
| without | | without diagnostic output |
| /01 | | 1 NC contact |
| (3) | | |
| without | | without LED switching conditions display |
| G | | with LED switching conditions display |
| (4) | | |
| without | | Pre-wired cable |
| ST | | with connector |
| (5) | | |
| L | | Door hinge on left-hand side |
| R | | Door hinge on right-hand side |

Pictures

Product picture (catalogue individual photo)



ID: kbns2f28

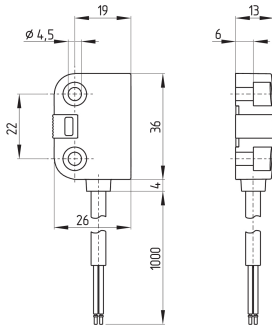
| 121.6 kB | .jpg | 352.778 x 123.119 mm - 1000 x 349 px - 72 dpi

| 17.3 kB | .png | 74.083 x 25.753 mm - 210 x 73 px - 72 dpi

| 17.0 kB | .png | 74.083 x 74.083 mm - 210 x 210 px - 72 dpi

| 1.3 MB | .png | 169.333 x 59.182 mm - 2000 x 699 px - 300 dpi

Dimensional drawing basic component



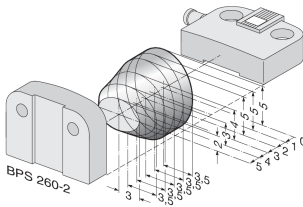
ID: kbns2g05
 | 37.3 kB | .cdr |
 | 4.5 kB | .png | 73.731 x 87.489 mm - 209 x 248 px - 72 dpi
 | 131.1 kB | .jpg | 352.425 x 417.336 mm - 999 x 1183 px - 72 dpi

Diagram

(3) BK S13 → S14 BU (4)
 (1) WH S21 → S22 BN (2)

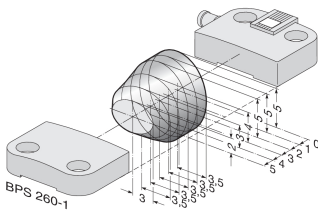
ID: kbns2k27
 | 56.4 kB | .jpg | 352.778 x 70.203 mm - 1000 x 199 px - 72 dpi
 | 2.7 kB | .png | 74.083 x 14.817 mm - 210 x 42 px - 72 dpi

Characteristic curve



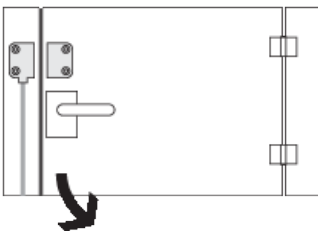
ID: kbns2d03
 | 18.5 kB | .png | 74.083 x 49.036 mm - 210 x 139 px - 72 dpi
 | 200.1 kB | .jpg | 352.778 x 233.892 mm - 1000 x 663 px - 72 dpi

Characteristic curve



ID: kbns2d02
 | 19.2 kB | .png | 74.083 x 49.389 mm - 210 x 140 px - 72 dpi
 | 200.9 kB | .jpg | 352.778 x 235.303 mm - 1000 x 667 px - 72 dpi

Clipart



ID: kbns2c01
 | 20.1 kB | .cdr |
 | 1.7 kB | .png | 74.083 x 52.564 mm - 210 x 149 px - 72 dpi