



TV8S 335-02Z-M20

- 1 Cable entry M 20 x 1.5
- Metal enclosure
- Good resistance to oil and petroleum spirit
- Actuator heads can be repositioned by 4 x 90°
- 40,5 mm x 107 mm x 65,3 mm
- Actuator shaft can be turned 360°

Data

Ordering data

Product type description	TV8S 335-02Z-M20
Article number (order number)	151168631
EAN (European Article Number)	8905236110351
eCl@ss number, version 12.0	27-27-06-09
eCl@ss number, version 11.0	27-27-06-09
eCl@ss number, version 9.0	27-27-06-09
ETIM number, version 7.0	EC002591
ETIM number, version 6.0	EC002591

General data

Housing material	Light alloy die-casting
Housing coating material	painted

Gross weight 265 g

General data - Features

Number of safety contacts 2

Safety classification

Standards BG-GS-ET-15
EN ISO 13849-1
EN IEC 60947-5-1

Mission time 20 Year(s)

Safety classification - Safety outputs

B_{10D} Normally-closed contact (NC) 20,000,000 Operations

Mechanical data

Actuating element Other

Mechanical lifetime, minimum 1,000,000 Operations

Positive break angle 7 °

Mounting hole for the shaft 8 mm

Positive break torque 0.6 Nm

Mechanical data - Connection technique

Termination Screw terminals M20 x 1.5

Cable section, minimum 0.75 mm²

Cable section, maximum 2.5 mm²

Note All indications including the conductor ferrules.

Mechanical data - connector side B

Connector typ Female connector

Mechanical data - Dimensions

Length of sensor 65.3 mm

Width of sensor 40.5 mm

Height of sensor 107 mm

Ambient conditions

Degree of protection IP67

Ambient temperature -25 ... +70 °C

Ambient conditions - Insulation values

Rated insulation 500 V
voltage U_i

Rated impulse 6 kV
withstand voltage U_{imp}

Electrical data

Thermal test current 10 A

Required rated short- 400 A
circuit current

Utilisation category AC- 230 VAC
15

Utilisation category AC- 4 A
15

Utilisation category DC- 24 VDC
13

Utilisation category DC- 4 A
13

Switching element Opener (NC)

Switching principle	Slow action
Maximale Schalthäufigkeit	1,000 /h
Material of the contacts, electrical	Silver

Note

Note (General)	<p>By turning the head in 90° steps, 8 actuating planes are possible. A Torx T10 screwdriver is required for this purpose. Even when the screw is removed, the head is self-retaining. The switch can still not be tampered.</p> <p>Adjustment tool: locking screw to fix, shaft pre-drilled to pin</p> <p>Universal joint available to compensate for axial displacement (only for shaft bore 10 mm)</p>
----------------	---

Ordering code

Product type description:
TV(1)S 335-(2)Z-(3)

(1)	
8	Shaft bore Ø 8 mm
10	Shaft bore Ø 10 mm
(2)	
02	2 NC contact
03	3 NC contact
11	1 NO contact/1 NC contact
12	1 NO contact/2 NC contacts
(3)	
without	Cable entry M20
NPT	Cable entry NPT 1/2"
ST	M12 connector with A-coding (Caution! According to EN 60204-1, the versions with connector must only be used in PELV circuits.)
ST-2310	M12 connector with B-coding (Caution! According to EN 60204-1, the versions with connector must only be used in PELV circuits.)

G24

with LED (only available for version with one NO and one NC contact)

Pictures

Product picture (catalogue individual photo)



ID: ktv33f01

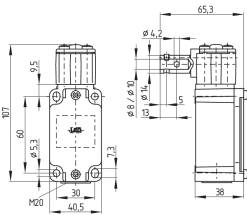
| 726.4 kB | .jpg | 352.778 x 555.978 mm - 1000 x 1576 px - 72 dpi

| 82.3 kB | .png | 74.083 x 116.769 mm - 210 x 331 px - 72 dpi

| 33.7 kB | .png | 74.083 x 74.083 mm - 210 x 210 px - 72 dpi

| 6.0 MB | .png | 166.557 x 262.578 mm - 2000 x 3153 px - 305 dpi

Dimensional drawing basic component



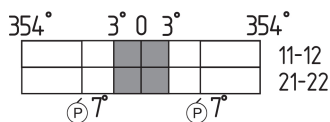
ID: 1tvs3g01

| 38.8 kB | .cdr |

| 10.4 kB | .png | 74.083 x 51.858 mm - 210 x 147 px - 72 dpi

| 127.2 kB | .jpg | 352.778 x 247.297 mm - 1000 x 701 px - 72 dpi

Switch travel diagram

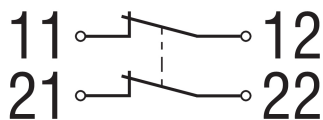


ID: ktvs3s01

| 55.2 kB | .jpg | 352.778 x 125.236 mm - 1000 x 355 px - 72 dpi

| 3.5 kB | .png | 74.083 x 26.458 mm - 210 x 75 px - 72 dpi

Diagram

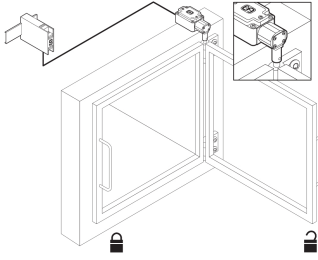


ID: k2o--k01

| 48.8 kB | .jpg | 352.778 x 125.236 mm - 1000 x 355 px - 72 dpi

| 2.3 kB | .png | 74.083 x 26.458 mm - 210 x 75 px - 72 dpi

Sample application illustration product



ID: pssp-a19

| 435.4 kB | .cdr |

| 16.6 kB | .png | 74.083 x 57.856 mm - 210 x 164 px - 72 dpi

| 161.7 kB | .jpg | 352.778 x 275.872 mm - 1000 x 782 px - 72 dpi

K.A. Schmersal GmbH & Co. KG, Möddinghofe 30, 42279 Wuppertal

The details and data referred to have been carefully checked. Images may diverge from original. Further technical data can be found in the manual. Technical amendments and errors possible.

Generated on: 27/02/2026, 14:19