



Z1K 335-11Z-1637

- Metal enclosure
- Wide range of alternative actuators
- Good resistance to oil and petroleum spirit
- 40,5 mm x 76 mm x 38 mm
- Actuator heads can be repositioned by 4 x 90°
- Design to EN 50041

Data

Ordering data

Note (Delivery capacity)	Not available!
Product type description	Z1K 335-11Z-1637
Article number (order number)	151149541
eCl@ss number, version 12.0	27-27-26-01
eCl@ss number, version 11.0	27-27-26-01
eCl@ss number, version 9.0	27-27-26-01
ETIM number, version 7.0	EC000030
ETIM number, version 6.0	EC000030

Approvals - Standards

Certificates	cULus CCC
--------------	--------------

General data

Housing construction form	Norm construction design
Housing coating material	painted
Gross weight	197 g

General data - Features

Safety functions	Yes
------------------	-----

Safety classification

Standards	EN IEC 60947-5-1
-----------	------------------

Mission time	20 Year(s)
--------------	------------

Safety classification - Safety outputs

B _{10D} Normally-closed contact (NC)	20,000,000 Operations
---	-----------------------

Mechanical data

Actuating element	Offset roller lever
-------------------	---------------------

Mechanical lifetime, minimum	30,000,000 Operations
------------------------------	-----------------------

Actuating force, minimum	17 N
--------------------------	------

Actuating speed, maximum	0.5 m/s
--------------------------	---------

Note (Actuating speed)	Actuating speed with actuating angle 30° to switch axis
------------------------	---

Mechanical data - Connection technique

Termination	Screw terminals M20 x 1.5
-------------	---------------------------

Cable section, minimum	0.75 mm ²
------------------------	----------------------

Cable section, maximum	2.5 mm ²
------------------------	---------------------

Note	All indications including the conductor ferrules.
------	---

Mechanical data - Dimensions

Length of sensor	38 mm
------------------	-------

Width of sensor	40.5 mm
-----------------	---------

Height of sensor	118.5 mm
------------------	----------

Ambient conditions

Ambient temperature -30 ... +80 °C

Electrical data

Thermal test current	10 A
Required rated short-circuit current	1,000 A
Utilisation category AC-15	230 VAC
Utilisation category AC-15	4 A
Utilisation category DC-13	24 VDC
Utilisation category DC-13	4 A
Switching element	1 NO contact, 1 NC contacts
Switching principle	Snap action
Maximale Schalthäufigkeit	5,000 /h
Material of the contacts, electrical	Gold-plated silver (AgNi 15 + Au 0,3µm)

Ordering code

Product type description:

(1)(2) 3(3)-(4)Z(5)-(6)-(7)-(8)-(9)

(1)

Z	Snap action
----------	-------------

T	Slow action
----------	-------------

(2)

S	Plunger S
----------	-----------

R	Roller plunger R
----------	------------------

H	Roller lever H
----------	----------------

10H	Rod lever 10H
------------	---------------

7H	Roller lever 7H
-----------	-----------------

1K	Offset roller lever 1K
-----------	------------------------

3K	Angle roller lever 3K
-----------	-----------------------

RMS	Brass roller
4V.	Basic device for roller lever (without actuator)
(3)	
335	slim design
355	large design
(4)	
11	1 NO contact/1 NC contact
02	2 NC contact
20	2 NO contacts (not suitable for safety applications)
01/01	1 NC contact left / 1 NC contact right
12	1 NO contact/2 NC contacts
03	3 NC contact
(5)	
H	Slow action with staggered contacts
UE	Slow action with overlapping contacts
2272	2272 Special roller bolt with collar
1183	with aluminium rod
1699-1	Exterior stainless steel bolts and clamp
(6)	
G24	with LED
(7)	
1	Cable entry M20
M20	Cable entry M20
NPT	Cable entry NPT 1/2"
ST	M12 connector with A-coding (Caution! According to EN 60204-1, the versions with connector must only be used in PELV circuits.)
ST-2310	M12 connector with B-coding (Caution! According to EN 60204-1, the versions with connector must only be used in PELV circuits.)

(8)

2138

Roller lever 7H for position switches with safety function

(9)

1637

Gold-plated contacts

Pictures

Product picture (catalogue individual photo)



ID: k335kf01

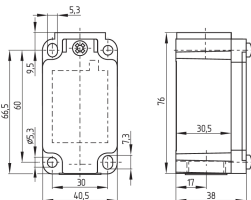
| 1.1 MB | .jpg | 352.778 x 784.225 mm - 1000 x 2223 px - 72 dpi

| 110.7 kB | .png | 74.083 x 164.747 mm - 210 x 467 px - 72 dpi

| 25.8 kB | .png | 74.083 x 74.083 mm - 210 x 210 px - 72 dpi

| 12.0 MB | .png | 169.333 x 376.513 mm - 2000 x 4447 px - 300 dpi

Dimensional drawing basic component



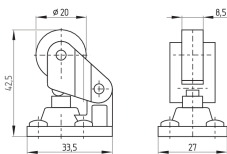
ID: 1-335g01

| 96.7 kB | .cdr |

| 4.5 kB | .png | 74.083 x 51.506 mm - 210 x 146 px - 72 dpi

| 105.8 kB | .jpg | 352.778 x 245.886 mm - 1000 x 697 px - 72 dpi

Dimensional drawing actuator



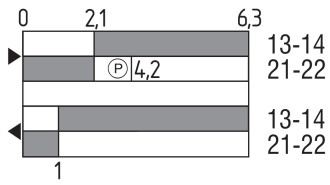
ID: 1k336g01

| 57.2 kB | .cdr |

| 7.0 kB | .png | 74.083 x 51.506 mm - 210 x 146 px - 72 dpi

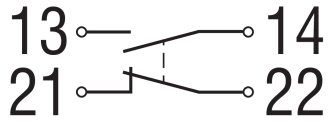
| 71.4 kB | .jpg | 352.778 x 245.886 mm - 1000 x 697 px - 72 dpi

Switch travel diagram



ID: kk335s18
 | 25.9 kB | .cdr |
 | 2.4 kB | .png | 74.083 x 39.511 mm - 210 x 112 px - 72 dpi
 | 69.5 kB | .jpg | 352.778 x 188.031 mm - 1000 x 533 px - 72 dpi

Diagram



ID: k1o1sk01
 | 52.2 kB | .jpg | 352.778 x 143.581 mm - 1000 x 407 px - 72 dpi
 | 2.6 kB | .png | 74.083 x 29.986 mm - 210 x 85 px - 72 dpi

K.A. Schmersal GmbH & Co. KG, Möddinghofe 30, 42279 Wuppertal

The details and data referred to have been carefully checked. Images may diverge from original. Further technical data can be found in the manual. Technical amendments and errors possible.

Generated on: 27/02/2026, 14:15