



Z1K 336-11Z-RMS

- Design to EN 50041
- Thermoplastic enclosure
- Double-insulated
- Good resistance to oil and petroleum spirit
- Wide range of alternative actuators
- Actuator heads can be repositioned by 4 x 90°
- 1 Cable entry M 20 x 1.5

Data

Ordering data

| | |
|-------------------------------|-----------------|
| Note (Delivery capacity) | Not available! |
| Product type description | Z1K 336-11Z-RMS |
| Article number (order number) | 153011758 |
| eCl@ss number, version 12.0 | 27-27-26-01 |
| eCl@ss number, version 11.0 | 27-27-26-01 |
| eCl@ss number, version 9.0 | 27-27-26-01 |
| ETIM number, version 7.0 | EC000030 |
| ETIM number, version 6.0 | EC000030 |

Approvals - Standards

| | |
|--------------|--------------|
| Certificates | cULus CCC |
|--------------|--------------|

General data

| | |
|---------------------------|---------------------------------|
| Housing construction form | Norm construction design |
| Housing material | Plastic, glass-fibre-reinforced |

General data - Features

| | |
|------------------|-----|
| Safety functions | Yes |
|------------------|-----|

Safety classification

| | |
|-----------|------------------|
| Standards | EN IEC 60947-5-1 |
|-----------|------------------|

| | |
|--------------|------------|
| Mission time | 20 Year(s) |
|--------------|------------|

Safety classification - Safety outputs

| | |
|---|-----------------------|
| B _{10D} Normally-closed contact (NC) | 20,000,000 Operations |
|---|-----------------------|

Mechanical data

| | |
|-------------------|---------------------|
| Actuating element | Offset roller lever |
|-------------------|---------------------|

| | |
|-----------------|-------|
| Roller material | Brass |
|-----------------|-------|

| | |
|------------------------------|-----------------------|
| Mechanical lifetime, minimum | 30,000,000 Operations |
|------------------------------|-----------------------|

| | |
|--------------------------|------|
| Actuating force, minimum | 17 N |
|--------------------------|------|

| | |
|--------------------------|---------|
| Actuating speed, maximum | 0.5 m/s |
|--------------------------|---------|

| | |
|------------------------|---|
| Note (Actuating speed) | Actuating speed with actuating angle 30° to switch axis |
|------------------------|---|

Mechanical data - Connection technique

| | |
|-------------|---------------------------|
| Termination | Screw terminals M20 x 1.5 |
|-------------|---------------------------|

| | |
|------------------------|----------------------|
| Cable section, minimum | 0.75 mm ² |
|------------------------|----------------------|

| | |
|------------------------|---------------------|
| Cable section, maximum | 2.5 mm ² |
|------------------------|---------------------|

| | |
|------|---|
| Note | All indications including the conductor ferrules. |
|------|---|

Mechanical data - Dimensions

| | |
|------------------|-------|
| Length of sensor | 38 mm |
|------------------|-------|

| | |
|-----------------|---------|
| Width of sensor | 40.5 mm |
|-----------------|---------|

Height of sensor 118.5 mm

Ambient conditions

Ambient temperature -30 ... +80 °C

Ambient conditions - Insulation values

Rated impulse withstand voltage U_{imp} 6 kV

Electrical data

| | |
|--------------------------------------|-----------------------------|
| Thermal test current | 10 A |
| Required rated short-circuit current | 1,000 A |
| Utilisation category AC-15 | 230 VAC |
| Utilisation category AC-15 | 4 A |
| Utilisation category DC-13 | 24 VDC |
| Utilisation category DC-13 | 4 A |
| Switching element | 1 NO contact, 1 NC contacts |
| Switching principle | Snap action |
| Maximale Schalthäufigkeit | 5,000 /h |
| Material of the contacts, electrical | Silver |

Ordering code

Product type description:

(1)(2) 336-(3)(4)-(5)-(6)-(7)-(8)-(9)

(1)

| | |
|----------|----------------------------|
| Z | Snap action |
| T | Slow action (not for AF/S) |

(2)

| | |
|----------|------------------|
| S | Plunger S |
| R | Roller plunger R |

| | |
|----------------|---|
| H | Roller lever H |
| 10H | Rod lever 10H |
| 7H | Roller lever 7H |
| 1K | Offset roller lever 1K |
| 3K | Angle roller lever 3K |
| RMS | Brass roller |
| (3) | |
| 11 | 1 NO contact/1 NC contact |
| 02 | 2 NC contact |
| 20 | 2 NO contacts, (switches with 2 NO contacts are not suitable for safety applications) |
| 01/01 | 1 NC contact left / 1 NC contact right |
| (4) | |
| Y | IP 65 |
| Z | IP 67 |
| (5) | |
| | without latching |
| R | with latching |
| (6) | |
| H | Slow action with staggered contacts |
| UE | Slow action with overlapping contacts |
| (7) | |
| without | Cable entry M20 |
| NPT | Cable entry NPT 1/2" |
| ST | M12 connector with A-coding |
| ST-2310 | M12 connector with B-coding |
| (8) | |
| 2138 | Roller lever 7H for position switches with safety function |

Pictures

Product picture (catalogue individual photo)



ID: k336kf03

| 872.5 kB | .jpg | 352.778 x 805.039 mm - 1000 x 2282 px - 72 dpi

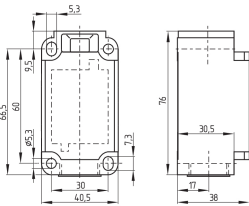
| 117.7 kB | .png | 74.083 x 168.981 mm - 210 x 479 px - 72 dpi

| 28.2 kB | .jpg | 53.975 x 123.472 mm - 153 x 350 px - 72 dpi

| 27.8 kB | .png | 74.083 x 74.083 mm - 210 x 210 px - 72 dpi

| 10.5 MB | .png | 169.333 x 386.419 mm - 2000 x 4564 px - 300 dpi

Dimensional drawing basic component



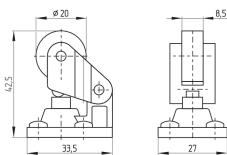
ID: 1-336g01

| 51.4 kB | .cdr |

| 4.1 kB | .png | 74.083 x 51.506 mm - 210 x 146 px - 72 dpi

| 107.0 kB | .jpg | 352.778 x 245.181 mm - 1000 x 695 px - 72 dpi

Dimensional drawing actuator



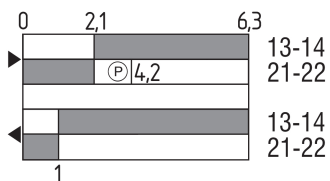
ID: 1k336g01

| 57.2 kB | .cdr |

| 7.0 kB | .png | 74.083 x 51.506 mm - 210 x 146 px - 72 dpi

| 71.4 kB | .jpg | 352.778 x 245.886 mm - 1000 x 697 px - 72 dpi

Switch travel diagram



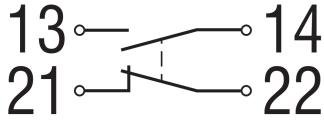
ID: kk335s18

| 25.9 kB | .cdr |

| 2.4 kB | .png | 74.083 x 39.511 mm - 210 x 112 px - 72 dpi

| 69.5 kB | .jpg | 352.778 x 188.031 mm - 1000 x 533 px - 72 dpi

Diagram



ID: k1o1sk01

| 52.2 kB | .jpg | 352.778 x 143.581 mm - 1000 x 407 px - 72 dpi

| 2.6 kB | .png | 74.083 x 29.986 mm - 210 x 85 px - 72 dpi

K.A. Schmersal GmbH & Co. KG, Möddinghofe 30, 42279 Wuppertal

The details and data referred to have been carefully checked. Images may diverge from original. Further technical data can be found in the manual. Technical amendments and errors possible.

Generated on: 27/02/2026, 14:18