



Z4V7H 335-11Z-1058

- with rubber roller 50 mm diameter

Data

Ordering data

Note (Delivery capacity)	Not available!
Product type description	Z4V7H 335-11Z-1058
Article number (order number)	101090091

General data

Housing construction form	Norm construction design
Actuator type to EN 50041	A
Housing coating material	Painted
Lever material	Metal film
Gross weight	300 g

Safety classification

Standards	BG-GS-ET-15 EN ISO 13849-1 EN IEC 60947-5-1
Mission time	20 Year(s)

Mechanical data

Actuating element	Roller lever
Roller material	rubber
Mechanical lifetime, minimum	30,000,000 Operations
Actuating speed, maximum	2.5 m/s
Note (Actuating speed)	Actuating speed with actuating angle 30° to switch axis
Actuating torque, minimum	0.3 Nm

Mechanical data - Connection technique

Termination	Screw terminals M20 x 1.5
Cable section, minimum	0.75 mm ²
Cable section, maximum	2.5 mm ²

Mechanical data - Dimensions

Length of sensor	60.6 mm
Width of sensor	40.5 mm
Height of sensor	129.5 mm

Ambient conditions

Ambient temperature	-30 ... +80 °C
---------------------	----------------

Electrical data

Thermal test current	10 A
Required rated short-circuit current	1,000 A
Utilisation category AC-15	230 VAC
Utilisation category AC-15	4 A
Utilisation category DC-13	24 VDC
Utilisation category DC-13	4 A
Switching element	1 NO contact, 1 NC contacts

Switching principle	Snap action
Maximale Schalthäufigkeit	5,000 /h
Material of the contacts, electrical	Silver

Note

Note (General) (-1058) with rubber roller diameter 50mm, width 11,5mm

Ordering code

Product type description:

(1)(2) 3(3)-(4)Z(5)-(6)-(7)-(8)-(9)

(1)

Z Snap action

T Slow action

(2)

S Plunger S

R Roller plunger R

H Roller lever H

10H Rod lever 10H

7H Roller lever 7H

1K Offset roller lever 1K

3K Angle roller lever 3K

RMS Brass roller

4V. Basic device for roller lever (without actuator)

(3)

335 slim design

355 large design

(4)

11 1 NO contact/1 NC contact

02 2 NC contact

20	2 NO contacts (not suitable for safety applications)
01/01	1 NC contact left / 1 NC contact right
12	1 NO contact/2 NC contacts
03	3 NC contact

(5)

H	Slow action with staggered contacts
UE	Slow action with overlapping contacts
2272	2272 Special roller bolt with collar
1183	with aluminium rod
1699-1	Exterior stainless steel bolts and clamp

(6)

G24	with LED
------------	----------

(7)

1	Cable entry M20
M20	Cable entry M20
NPT	Cable entry NPT 1/2"
ST	M12 connector with A-coding (Caution! According to EN 60204-1, the versions with connector must only be used in PELV circuits.)
ST-2310	M12 connector with B-coding (Caution! According to EN 60204-1, the versions with connector must only be used in PELV circuits.)

(8)

2138	Roller lever 7H for position switches with safety function
-------------	--

(9)

1637	Gold-plated contacts
-------------	----------------------

Pictures

Product picture (catalogue individual photo)



ID: K336HF06-edit

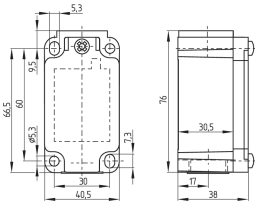
| 1.3 MB | .jpg | 352.778 x 903.464 mm - 1000 x 2561 px - 72 dpi

| 166.9 kB | .png | 74.083 x 189.442 mm - 210 x 537 px - 72 dpi

| 26.7 kB | .png | 74.083 x 74.083 mm - 210 x 210 px - 72 dpi

| 14.4 MB | .png | 166.557 x 426.553 mm - 2000 x 5122 px - 305 dpi

Dimensional drawing basic component



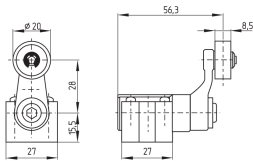
ID: 1-335g01

| 96.7 kB | .cdr |

| 4.5 kB | .png | 74.083 x 51.506 mm - 210 x 146 px - 72 dpi

| 105.8 kB | .jpg | 352.778 x 245.886 mm - 1000 x 697 px - 72 dpi

Dimensional drawing actuator



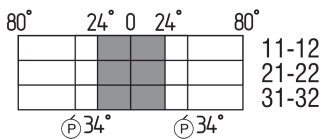
ID: 1h336g01

| 65.6 kB | .cdr |

| 4.1 kB | .png | 74.083 x 51.858 mm - 210 x 147 px - 72 dpi

| 84.5 kB | .jpg | 352.778 x 247.297 mm - 1000 x 701 px - 72 dpi

Switch travel diagram



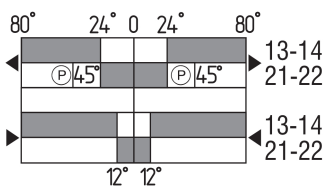
ID: kh335s20

| 25.6 kB | .cdr |

| 2.2 kB | .png | 74.083 x 30.339 mm - 210 x 86 px - 72 dpi

| 72.0 kB | .jpg | 352.778 x 143.933 mm - 1000 x 408 px - 72 dpi

Switch travel diagram



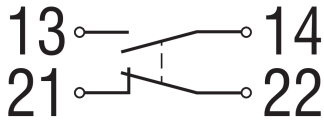
ID: kh335s02

| 25.4 kB | .cdr |

| 3.0 kB | .png | 74.083 x 40.569 mm - 210 x 115 px - 72 dpi

| 98.4 kB | .jpg | 352.778 x 193.322 mm - 1000 x 548 px - 72 dpi

Diagram



ID: k1o1sk01

| 52.2 kB | .jpg | 352.778 x 143.581 mm - 1000 x 407 px - 72 dpi

| 2.6 kB | .png | 74.083 x 29.986 mm - 210 x 85 px - 72 dpi

K.A. Schmersal GmbH & Co. KG, Möddinghofe 30, 42279 Wuppertal

The details and data referred to have been carefully checked. Images may diverge from original. Further technical data can be found in the manual. Technical amendments and errors possible.

Generated on: 27/02/2026, 14:01