



## ZR 332-11Y

- Metal enclosure
- Wide range of alternative actuators
- Good resistance to oil and petroleum spirit
- 40 mm x 76 mm x 40 mm
- Actuator heads can be repositioned by 4 x 90°
- 1 Cable entry M 20 x 1.5
- Large contact break
- High repeat accuracy of the switching points
- Gold-plated solid silver contacts
- Magnetic-storage snap action system
- Switching system separated from snap action system, providing constant switching point independent of contact wear
- Design to EN 50041

## Data

### Ordering data

|                               |               |
|-------------------------------|---------------|
| Product type description      | ZR 332-11Y    |
| Article number (order number) | 131054557     |
| EAN (European Article Number) | 8905236106439 |
| eCl@ss number, version 12.0   | 27-27-26-01   |
| eCl@ss number, version 11.0   | 27-27-26-01   |
| eCl@ss number, version 9.0    | 27-27-26-01   |
| ETIM number, version 7.0      | EC000030      |
| ETIM number, version 6.0      | EC000030      |

### Approvals - Standards

|              |     |
|--------------|-----|
| Certificates | CCC |
|--------------|-----|

## General data

|                           |                                 |
|---------------------------|---------------------------------|
| Standards                 | BG-GS-ET-15<br>EN IEC 60947-5-1 |
| Housing construction form | Norm construction design        |
| Actuator type to EN 50041 | C                               |
| Housing material          | Light alloy die-casting         |
| Housing coating material  | painted                         |
| Gross weight              | 225 g                           |

## General data - Features

|                              |     |
|------------------------------|-----|
| Safety functions             | Yes |
| Number of auxiliary contacts | 1   |
| Number of safety contacts    | 1   |

## Safety classification

|              |                  |
|--------------|------------------|
| Standards    | EN IEC 60947-5-1 |
| Mission time | 20 Year(s)       |

## Safety classification - Safety outputs

|   |                       |
|---|-----------------------|
| B <sub>10D</sub> Normally-closed contact (NC) | 20,000,000 Operations |
|---|-----------------------|

## Mechanical data

|                                     |                                     |
|-------------------------------------|-------------------------------------|
| Actuating element                   | Roller plunger                      |
| Roller material                     | Brass                               |
| Mechanical lifetime, minimum        | 30,000,000 Operations               |
| Actuating force                     | 31 N                                |
| Contact opening                     | > 2 x 1.25 mm (for complete stroke) |
| Actuating speed, minimum            | 10 mm/min                           |
| Repeat accuracy of switching points | 0.02 mm                             |

## Mechanical data - Connection technique

|                        |   |
|------------------------|---|
| Termination            | Screw terminals M20 x 1.5                         |
| Cable section, minimum | 1.5 mm <sup>2</sup>                               |
| Cable section, maximum | 2.5 mm <sup>2</sup>                               |
| Note                   | All indications including the conductor ferrules. |

## Mechanical data - connector side B

|               |                  |
|---------------|------------------|
| Connector typ | Female connector |
|---------------|------------------|

## Mechanical data - Dimensions

|                  |          |
|------------------|----------|
| Length of sensor | 40 mm    |
| Width of sensor  | 40 mm    |
| Height of sensor | 116.5 mm |

## Ambient conditions

|                      |                |
|----------------------|----------------|
| Degree of protection | IP65<br>IP67   |
| Ambient temperature  | -30 ... +80 °C |

## Ambient conditions - Insulation values

|   |      |
|---|------|
| Rated impulse withstand voltage $U_{imp}$ | 4 kV |
|---|------|

## Electrical data

|                                      |                             |
|--------------------------------------|-----------------------------|
| Thermal test current                 | 6 A                         |
| Required rated short-circuit current | 1,000 A                     |
| Utilisation category AC-15           | 230 VAC                     |
| Utilisation category AC-15           | 2.5 A                       |
| Switching element                    | 1 NO contact, 1 NC contacts |

|                                      |   |
|--------------------------------------|---|
| Switching principle                  | Snap action                             |
| Bounce duration, maximum             | 2.5 ms                                  |
| Maximale Schalthäufigkeit            | 3,000 /h                                |
| Switchover time, minimum             | 1.5 ms                                  |
| Material of the contacts, electrical | Gold-plated silver (AgNi 15 + Au 0,3µm) |

## Ordering code

Product type description:  
Z(1) 332-11Y-(2)-(3)

(1)

|            |                  |
|------------|------------------|
| <b>S</b>   | Plunger S        |
| <b>R</b>   | Roller plunger R |
| <b>H</b>   | Roller lever H   |
| <b>10H</b> | Rod lever 10H    |
| <b>7H</b>  | Roller lever 7H  |

(2)

|                |   |
|----------------|---|
| <b>without</b> | Cable entry M20   |
| <b>ST</b>      | M12 connector with A-coding (Caution! According to EN 60204-1, the versions with connector must only be used in PELV circuits.) |
| <b>2310</b>    | M12 connector with B-coding (Caution! According to EN 60204-1, the versions with connector must only be used in PELV circuits.) |
| <b>PG13,5</b>  | Cable entry, PG screw fitting 13.5 mm   |

(3)

|             |  |
|-------------|--|
| <b>2138</b> | Roller lever 7H for position switches with safety function |
|-------------|--|

## Pictures

**Product picture (catalogue individual photo)**



ID: k332rf01

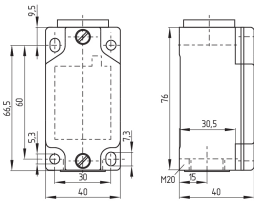
| 993.3 kB | .jpg | 352.778 x 826.206 mm - 1000 x 2342 px - 72 dpi

| 145.5 kB | .png | 74.083 x 173.214 mm - 210 x 491 px - 72 dpi

| 28.1 kB | .png | 74.083 x 74.083 mm - 210 x 210 px - 72 dpi

| 10.5 MB | .png | 166.557 x 390.077 mm - 2000 x 4684 px - 305 dpi

## Dimensional drawing basic component



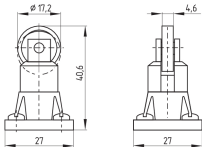
ID: 1-332g01

| 26.9 kB | .cdr |

| 4.4 kB | .png | 74.083 x 51.506 mm - 210 x 146 px - 72 dpi

| 103.8 kB | .jpg | 352.778 x 245.886 mm - 1000 x 697 px - 72 dpi

## Dimensional drawing actuator



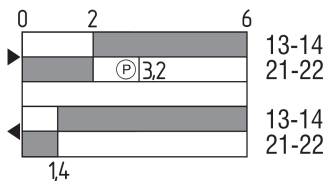
ID: 1r336g01

| 51.1 kB | .cdr |

| 6.6 kB | .png | 74.083 x 52.211 mm - 210 x 148 px - 72 dpi

| 66.1 kB | .jpg | 352.778 x 248.003 mm - 1000 x 703 px - 72 dpi

## Switch travel diagram



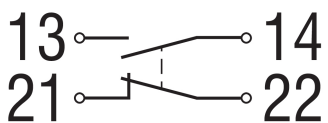
ID: ks332s01

| 22.8 kB | .cdr |

| 2.3 kB | .png | 74.083 x 40.217 mm - 210 x 114 px - 72 dpi

| 69.8 kB | .jpg | 352.778 x 191.911 mm - 1000 x 544 px - 72 dpi

## Diagram



ID: k1o1sk01

| 52.2 kB | .jpg | 352.778 x 143.581 mm - 1000 x 407 px - 72 dpi

| 2.6 kB | .png | 74.083 x 29.986 mm - 210 x 85 px - 72 dpi

## Operating principle



ID: 235rz01

| 15.2 kB | .cdr |

| 149.7 kB | .jpg | 352.778 x 799.394 mm - 1000 x 2266 px - 72 dpi

| 2.9 kB | .png | 74.083 x 167.922 mm - 210 x 476 px - 72 dpi

K.A. Schmersal GmbH & Co. KG, Möddinghofe 30, 42279 Wuppertal

The details and data referred to have been carefully checked. Images may diverge from original. Further technical data can be found in the manual. Technical amendments and errors possible.

Generated on: 27/02/2026, 14:18