



AZ/AZM201-B30-LTAG1P1

- for left hinged doors
- with handle and Emergency exit handle
- Actuator for hinged guards
- Easy and intuitive operation
- No risk of injury from protruding actuator
- No supplementary door handles required
- Does not protrude into the door opening

Data

Ordering data

Product type description	AZ/AZM201-B30-LTAG1P1
Article number (order number)	103013498
EAN (European Article Number)	4030661493466
eCl@ss number, version 12.0	27-27-26-06
eCl@ss number, version 11.0	27-27-26-06
eCl@ss number, version 9.0	27-27-26-06
ETIM number, version 7.0	EC001487
ETIM number, version 6.0	EC001487

Approvals - Standards

Note	Certification in combination with the AZ /AZM 201 devices
------	---

General data

Housing material	Glass-fibre, reinforced thermoplastic
------------------	---------------------------------------

Material of the actuator	Zinc die-cast
Material of the operators	Aluminium, plastic coating
Emergency exit material	Metal, plastic-coated
Gross weight	1,054 g

General data - Features

Emergency exit	Yes
----------------	-----

Mechanical data

Grip	handle
Mechanical lifetime, minimum	1,000,000 Operations
Door hinge	Left
Holding force F_{Zh} in accordance with EN ISO 14119	2,000 N
Holding force F_{max} , maximum	2,600 N
Actuator mounted	Outside

Mechanical data - Dimensions

Length of the actuator	94 mm
Width of the actuator	115 mm
Height of the actuator	115 mm
Length of the emergency exit	68 mm
Width of the emergency exit	115 mm
Height of the emergency exit	115 mm

Scope of delivery

Scope of delivery

The safety switch / solenoid interlock and the actuator unit must be ordered separately.: The safety switch / solenoid interlock and the actuator unit must be ordered separately.

Pictures

Product picture (catalogue individual photo)



ID: kb-30f05

| 310.5 kB | .jpg | 352.778 x 184.503 mm - 1000 x 523 px - 72 dpi

| 21.1 kB | .png | 74.083 x 38.806 mm - 210 x 110 px - 72 dpi

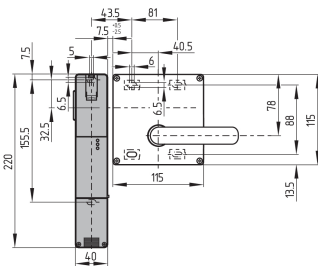
| 24.0 kB | .jpg | 263.525 x 137.936 mm - 747 x 391 px - 72 dpi

| 33.8 kB | .jpg | 123.472 x 64.558 mm - 350 x 183 px - 72 dpi

| 32.5 kB | .png | 74.083 x 74.083 mm - 210 x 210 px - 72 dpi

| 2.8 MB | .png | 200 x 104.6 mm - 2000 x 1046 px - 254 dpi

Dimensional drawing basic component

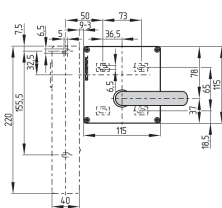


ID: 1azm2m37

| 134.9 kB | .jpg | 352.778 x 289.278 mm - 1000 x 820 px - 72 dpi

| 3.9 kB | .png | 74.083 x 60.678 mm - 210 x 172 px - 72 dpi

Dimensional drawing basic component



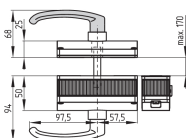
ID: 1azm2g03

| 21.7 kB | .swf |

| 4.0 kB | .png | 74.083 x 51.506 mm - 210 x 146 px - 72 dpi

| 102.7 kB | .jpg | 352.778 x 245.181 mm - 1000 x 695 px - 72 dpi

Dimensional drawing actuator



ID: 1azm2b12

| 6.8 kB | .png | 74.083 x 51.506 mm - 210 x 146 px - 72 dpi

| 80.8 kB | .jpg | 352.778 x 245.181 mm - 1000 x 695 px - 72 dpi

The details and data referred to have been carefully checked. Images may diverge from original. Further technical data can be found in the manual. Technical amendments and errors possible.

Generated on: 27/02/2026, 12:53