



## ZS 335-11Z-1637

- Metal enclosure
- Wide range of alternative actuators
- Good resistance to oil and petroleum spirit
- 40,5 mm x 76 mm x 38 mm
- Actuator heads can be repositioned by 4 x 90°
- Design to EN 50041

## Data

### Ordering data

Product type description	ZS 335-11Z-1637
Article number (order number)	151090771
eCl@ss number, version 12.0	27-27-26-01
eCl@ss number, version 11.0	27-27-26-01
eCl@ss number, version 9.0	27-27-26-01
ETIM number, version 7.0	EC000030
ETIM number, version 6.0	EC000030

### Approvals - Standards

Certificates	cULus CCC
--------------	--------------

### General data

Housing construction form	Norm construction design
Actuator type to EN 50041	B
Housing coating material	painted
Gross weight	192 g

## General data - Features

Safety functions Yes

## Safety classification

Standards EN IEC 60947-5-1

Mission time 20 Year(s)

## Safety classification - Safety outputs

B<sub>10D</sub> Normally-closed contact (NC) 20,000,000 Operations

## Mechanical data

Actuating element Plunger

Mechanical lifetime, minimum 30,000,000 Operations

Actuating speed, maximum 0.5 m/s

## Mechanical data - Connection technique

Termination Screw terminals M20 x 1.5

Cable section, minimum 0.75 mm<sup>2</sup>

Cable section, maximum 2.5 mm<sup>2</sup>

Note All indications including the conductor ferrules.

## Mechanical data - Dimensions

Length of sensor 38 mm

Width of sensor 40.5 mm

Height of sensor 103.5 mm

## Ambient conditions

Ambient temperature -30 ... +80 °C

## Ambient conditions - Insulation values

Rated impulse withstand voltage  $U_{imp}$  6 kV

## Electrical data

Thermal test current	10 A
Required rated short-circuit current	1,000 A
Utilisation category AC-15	230 VAC
Utilisation category AC-15	4 A
Utilisation category DC-13	24 VDC
Utilisation category DC-13	4 A
Switching element	1 NO contact, 1 NC contacts
Switching principle	Snap action
Maximale Schalthäufigkeit	5,000 /h
Material of the contacts, electrical	Gold-plated silver (AgNi 15 + Au 0,3µm)

## Ordering code

Product type description:  
(1)(2) 3(3)-(4)Z(5)-(6)-(7)-(8)-(9)

(1)

**Z** Snap action

**T** Slow action

(2)

**S** Plunger S

**R** Roller plunger R

**H** Roller lever H

**10H** Rod lever 10H

**7H** Roller lever 7H

**1K** Offset roller lever 1K

<b>3K</b>	Angle roller lever 3K
<b>RMS</b>	Brass roller
<b>4V.</b>	Basic device for roller lever (without actuator)
(3)	
<b>335</b>	slim design
<b>355</b>	large design
(4)	
<b>11</b>	1 NO contact/1 NC contact
<b>02</b>	2 NC contact
<b>20</b>	2 NO contacts (not suitable for safety applications)
<b>01/01</b>	1 NC contact left / 1 NC contact right
<b>12</b>	1 NO contact/2 NC contacts
<b>03</b>	3 NC contact
(5)	
<b>H</b>	Slow action with staggered contacts
<b>UE</b>	Slow action with overlapping contacts
<b>2272</b>	2272 Special roller bolt with collar
<b>1183</b>	with aluminium rod
<b>1699-1</b>	Exterior stainless steel bolts and clamp
(6)	
<b>G24</b>	with LED
(7)	
<b>1</b>	Cable entry M20
<b>M20</b>	Cable entry M20
<b>NPT</b>	Cable entry NPT 1/2"
<b>ST</b>	M12 connector with A-coding (Caution! According to EN 60204-1, the versions with connector must only be used in PELV circuits.)

**ST-2310**

M12 connector with B-coding (Caution! According to EN 60204-1, the versions with connector must only be used in PELV circuits.)

(8)

**2138**

Roller lever 7H for position switches with safety function

(9)

**1637**

Gold-plated contacts

## Pictures

### Product picture (catalogue individual photo)



ID: k335sf01

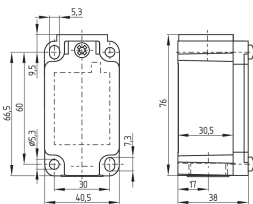
| 918.4 kB | .jpg | 352.778 x 759.178 mm - 1000 x 2152 px - 72 dpi

| 109.6 kB | .png | 74.083 x 159.456 mm - 210 x 452 px - 72 dpi

| 27.1 kB | .png | 74.083 x 74.083 mm - 210 x 210 px - 72 dpi

| 10.7 MB | .png | 169.333 x 364.49 mm - 2000 x 4305 px - 300 dpi

### Dimensional drawing basic component



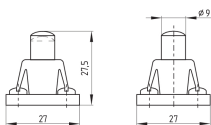
ID: 1-335g01

| 96.7 kB | .cdr |

| 4.5 kB | .png | 74.083 x 51.506 mm - 210 x 146 px - 72 dpi

| 105.8 kB | .jpg | 352.778 x 245.886 mm - 1000 x 697 px - 72 dpi

### Dimensional drawing actuator



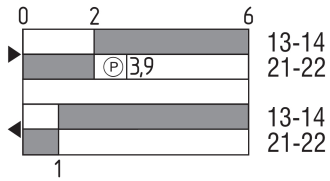
ID: 1s336g01

| 48.9 kB | .cdr |

| 2.7 kB | .png | 74.083 x 52.211 mm - 210 x 148 px - 72 dpi

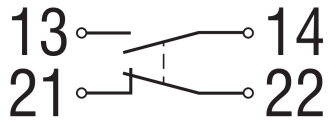
| 52.6 kB | .jpg | 352.778 x 248.003 mm - 1000 x 703 px - 72 dpi

## Switch travel diagram



ID: kr335s12  
| 25.9 kB | .cdr |  
| 2.4 kB | .png | 74.083 x 39.511 mm - 210 x 112 px - 72 dpi  
| 67.0 kB | .jpg | 352.778 x 188.031 mm - 1000 x 533 px - 72 dpi

## Diagram



ID: k1o1sk01  
| 52.2 kB | .jpg | 352.778 x 143.581 mm - 1000 x 407 px - 72 dpi  
| 2.6 kB | .png | 74.083 x 29.986 mm - 210 x 85 px - 72 dpi

K.A. Schmersal GmbH & Co. KG, Möddinghofe 30, 42279 Wuppertal

The details and data referred to have been carefully checked. Images may diverge from original. Further technical data can be found in the manual. Technical amendments and errors possible.

Generated on: 27/02/2026, 14:04