



AZ 15/16-B3-1747 RETROFIT KIT

- For very small actuating radii at 90° to the plane of the actuator
- Suitable for retrofitting
- For play-free interlocking of light guards
- The magnetic latch can be easily fitted in any actuating plane

Data

Ordering data

Product type description	AZ 15/16-B3-1747 RETROFIT KIT
Article number (order number)	101096090
EAN (European Article Number)	4030661100005
eCl@ss number, version 12.0	27-27-26-06
eCl@ss number, version 11.0	27-27-26-06
eCl@ss number, version 9.0	27-27-26-06
ETIM number, version 7.0	EC001487
ETIM number, version 6.0	EC001487

General data

Coding level according to EN ISO 14119	Low
Material of the actuator	Stainless steel (V2A)
Gross weight	42 g

Mechanical data

Actuating radius, minimum	32 mm
---------------------------	-------

Actuator	straight flexible
Latching force	30 N

Scope of delivery

Note (scope of delivery, number and type) Befestigungsschrauben nicht im Lieferumfang enthalten

Note

Note (General) The axis of the hinge must be 11 mm above and in a parallel plane to the top surface of the safety switch.
Actuating radius adjustable, minimum 32 mm, using an hexagonal key wrench SW 2,5 mm (b)

Pictures

Product picture (catalogue individual photo)



ID: kaz15f21

| 413.9 kB | .jpg | 343.958 x 352.778 mm - 975 x 1000 px - 72 dpi

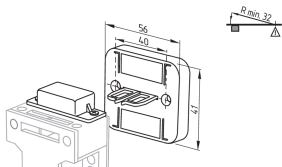
| 40.0 kB | .png | 74.083 x 75.847 mm - 210 x 215 px - 72 dpi

| 57.6 kB | .jpg | 120.297 x 123.472 mm - 341 x 350 px - 72 dpi

| 50.2 kB | .png | 74.083 x 74.083 mm - 210 x 210 px - 72 dpi

| 3.4 MB | .png | 200 x 205.1 mm - 2000 x 2051 px - 254 dpi

Dimensional drawing actuator



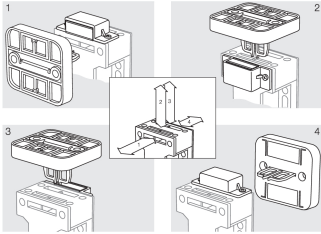
ID: 1az15b12

| 31.6 kB | .cdr |

| 10.6 kB | .png | 74.083 x 52.211 mm - 210 x 148 px - 72 dpi

| 110.3 kB | .jpg | 352.778 x 248.003 mm - 1000 x 703 px - 72 dpi

Operating principle



ID: kaz15a22

| 168.0 kB | .cdr |

| 267.1 kB | .jpg | 352.778 x 254 mm - 1000 x 720 px - 72 dpi

| 25.6 kB | .png | 74.083 x 53.269 mm - 210 x 151 px - 72 dpi

K.A. Schmersal GmbH & Co. KG, Möddinghofe 30, 42279 Wuppertal

The details and data referred to have been carefully checked. Images may diverge from original. Further technical data can be found in the manual. Technical amendments and errors possible.

Generated on: 27/02/2026, 14:27